

# SE PHOTOGRAPHY & IMAGING

SEPHOTOIMAGING.COM / 510.823.3035

## PRODUCTION CALL OUT SHEET

**!EYES ONLY FOR CAST AND CREW!**

### *Production Description:*

A lighting and lens test with model on the beach during the golden hour and sunset. Working on balancing the light with ambient. Image composition focusing on full body shots with emphasis on figure.

### *Production Date:*

Monday, April 30th, 2012

### *Broad Schedule (subject to change):*

7:15 PM Crew Meeting

7:25 PM Shoot Begins

8:15 PM Shoot Wraps

### *Shoot Location:*

Baker Beach, Parking Lot at Battery Chamberlin  
1504 Pershing Dr, Golden Gate National Recreation Area  
San Francisco, CA 94129

### *Weather Forecast:*

Mostly cloudy in the morning, then partly cloudy. Fog early. High of 72F. Breezy. Winds from the West at 15 to 20 mph.

### *Parking:*

Parking Lot at Battery Chamberlin

#### **CONFIDENTIALITY:**

This document and any files transmitted with it are confidential and intended solely for the use of the individual or entity to whom they are addressed. This document contains confidential information and is intended only for the individual(s) named. If you are not the named participant you should not disseminate, distribute or copy this document. Please notify Terrence Taylor/SE Photoimaging immediately by e-mail if you have received this document by mistake. If you are not the intended recipient you are notified that disclosing, copying, distributing or taking any action in reliance on the contents of this information is strictly prohibited. Thank you.

# SE PHOTOGRAPHY & IMAGING

SEPHOTOIMAGING.COM / 510.823.3035

## PRODUCTION CALL OUT SHEET

**!EYES ONLY FOR CAST AND CREW!**

*Contact/Crew details:*

*Lead Photographer:*

Terrence Taylor  
[510.823.3035 cell](tel:510.823.3035)  
[510.836.3035 office](tel:510.836.3035)  
[terry@sephotoimaging.com](mailto:terry@sephotoimaging.com)  
<http://www.sephotoimaging.com/>  
<http://www.modelmayhem.com/730008>

*Models:*

*TBA*

### **CONFIDENTIALITY:**

This document and any files transmitted with it are confidential and intended solely for the use of the individual or entity to whom they are addressed. This document contains confidential information and is intended only for the individual(s) named. If you are not the named participant you should not disseminate, distribute or copy this document. Please notify Terrence Taylor/SE Photoimaging immediately by e-mail if you have received this document by mistake. If you are not the intended recipient you are notified that disclosing, copying, distributing or taking any action in reliance on the contents of this information is strictly prohibited. Thank you.

# SE PHOTOGRAPHY & IMAGING

SEPHOTOIMAGING.COM / 510.823.3035

## PRODUCTION CALL OUT SHEET

!EYES ONLY FOR CAST AND CREW!

### *Wardrobe/Styling:*

Provided by model. Wardrobe appropriate to the beach. Swimwear preferred.

### *MUA/MUHA:*

Model arrives makeup ready.

### *Equipment Details:*

Nikon D700  
PCB Einstein Strobe  
Photoflex Medium Octodome  
Pocket Wizard Radio Triggers (2)  
Medium duty light stand  
Sandbag

### *Props & Accessories:*

TBA

#### **CONFIDENTIALITY:**

This document and any files transmitted with it are confidential and intended solely for the use of the individual or entity to whom they are addressed. This document contains confidential information and is intended only for the individual(s) named. If you are not the named participant you should not disseminate, distribute or copy this document. Please notify Terrence Taylor/SE Photoimaging immediately by e-mail if you have received this document by mistake. If you are not the intended recipient you are notified that disclosing, copying, distributing or taking any action in reliance on the contents of this information is strictly prohibited. Thank you.

# SE PHOTOGRAPHY & IMAGING

SEPHOTOIMAGING.COM / 510.823.3035

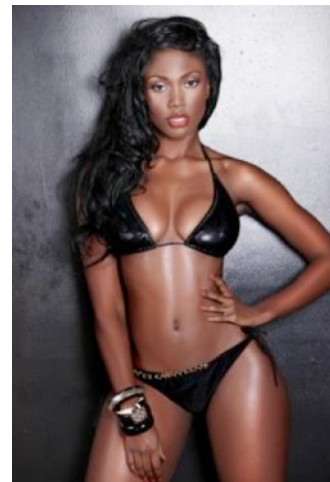
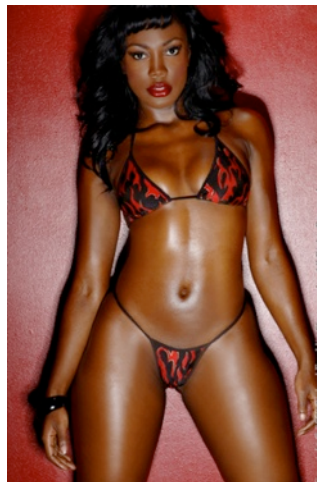
## PRODUCTION CALL OUT SHEET

!EYES ONLY FOR CAST AND CREW!

These are images I shot earlier on which I'm building upon:



*Inspiration Images:*



### CONFIDENTIALITY:

This document and any files transmitted with it are confidential and intended solely for the use of the individual or entity to whom they are addressed. This document contains confidential information and is intended only for the individual(s) named. If you are not the named participant you should not disseminate, distribute or copy this document. Please notify Terrence Taylor/SE Photoimaging immediately by e-mail if you have received this document by mistake. If you are not the intended recipient you are notified that disclosing, copying, distributing or taking any action in reliance on the contents of this information is strictly prohibited. Thank you.

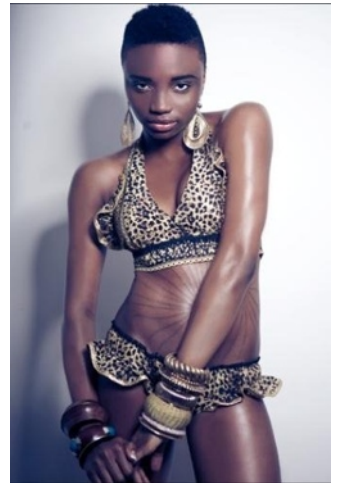
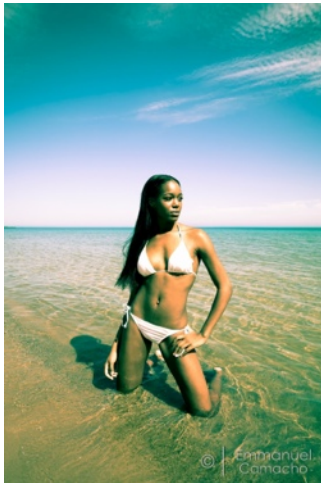
# SE PHOTOGRAPHY & IMAGING

SEPHOTOIMAGING.COM / 510.823.3035

## PRODUCTION CALL OUT SHEET

!EYES ONLY FOR CAST AND CREW!

*Inspiration Images:*



### CONFIDENTIALITY:

This document and any files transmitted with it are confidential and intended solely for the use of the individual or entity to whom they are addressed. This document contains confidential information and is intended only for the individual(s) named. If you are not the named participant you should not disseminate, distribute or copy this document. Please notify Terrence Taylor/SE Photoimaging immediately by e-mail if you have received this document by mistake. If you are not the intended recipient you are notified that disclosing, copying, distributing or taking any action in reliance on the contents of this information is strictly prohibited. Thank you.



# SE PHOTOGRAPHY & IMAGING

SEPHOTOIMAGING.COM / 510.823.3035

## PRODUCTION CALL OUT SHEET

!EYES ONLY FOR CAST AND CREW!



### *MUA/MUHA Inspiration:*

Light clean makeup on face.  
Well moisturized skin/oil/wet skin

### **CONFIDENTIALITY:**

This document and any files transmitted with it are confidential and intended solely for the use of the individual or entity to whom they are addressed. This document contains confidential information and is intended only for the individual(s) named. If you are not the named participant you should not disseminate, distribute or copy this document. Please notify Terrence Taylor/SE Photoimaging immediately by e-mail if you have received this document by mistake. If you are not the intended recipient you are notified that disclosing, copying, distributing or taking any action in reliance on the contents of this information is strictly prohibited. Thank you.