

SE PHOTOGRAPHY & IMAGING

SEPHOTOIMAGING.COM / 510.823.3035

PRODUCTION CALL OUT SHEET

!EYES ONLY FOR CAST AND CREW!

Production Description:

Portfolio development trade shoot with model Ethan Dong at Jack London Square in Oakland. The look will be dressy casual shirts and jackets in an outdoor urban environment. 3 looks?

Production Date:

Saturday, March 24th, 2012

Broad Schedule (subject to change):

09:00 AM	Crew Meeting
09:15 AM	MUHA and Styling
10:00 AM	Shoot begins
12:00 PM	Shoot wraps up

Shoot Location (subject to change):

Main: Jack London Square, Oakland CA
Alternate: 300 15th ST, San Francisco, CA 94103

Weather Forecast:

60 ° | 46 °F

Parking:

Street and garage parking available

CONFIDENTIALITY:

This document and any files transmitted with it are confidential and intended solely for the use of the individual or entity to whom they are addressed. This document contains confidential information and is intended only for the individual(s) named. If you are not the named participant you should not disseminate, distribute or copy this document. Please notify Terrence Taylor/SE Photoimaging immediately by e-mail if you have received this document by mistake. If you are not the intended recipient you are notified that disclosing, copying, distributing or taking any action in reliance on the contents of this information is strictly prohibited. Thank you.

SE PHOTOGRAPHY & IMAGING

SEPHOTOIMAGING.COM / 510.823.3035

PRODUCTION CALL OUT SHEET

!EYES ONLY FOR CAST AND CREW!

Contact/Crew details:

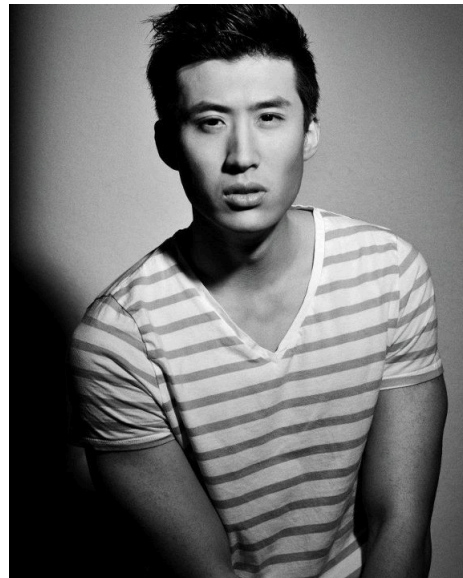
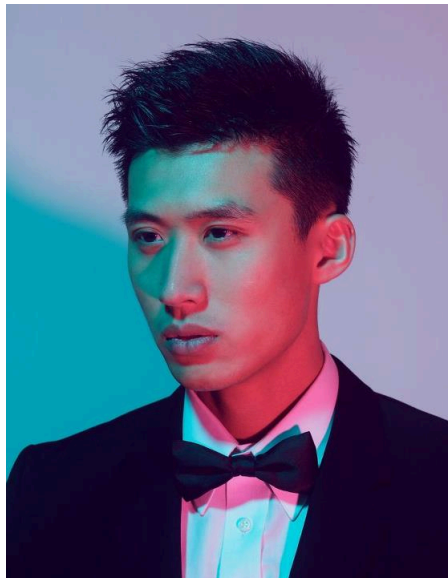
Lead Photographer:

Terrence Taylor
510.823.3035 cell
510.836.3035 office
terry@sephotoimaging.com
<http://www.sephotoimaging.com/>
<http://www.modelmayhem.com/730008>

Model(s):

*Ethan Dong
City Model Management*

*Shirt size: Small
Pants size: 29 x 32, 30 with a belt
Shoe: 9.5 to 10*



CONFIDENTIALITY:

This document and any files transmitted with it are confidential and intended solely for the use of the individual or entity to whom they are addressed. This document contains confidential information and is intended only for the individual(s) named. If you are not the named participant you should not disseminate, distribute or copy this document. Please notify Terrence Taylor/SE Photoimaging immediately by e-mail if you have received this document by mistake. If you are not the intended recipient you are notified that disclosing, copying, distributing or taking any action in reliance on the contents of this information is strictly prohibited. Thank you.

SE PHOTOGRAPHY & IMAGING

SEPHOTOIMAGING.COM / 510.823.3035

PRODUCTION CALL OUT SHEET

!EYES ONLY FOR CAST AND CREW!

Wardrobe/Styling:

Celine Wang
ccelinecc.tumblr.com

MUA/MUHA:

Terry Alabata
<http://www.modelmayhem.com/1547109>

Equipment Details:

TBA

Props & Accessories:

TBA

CONFIDENTIALITY:

This document and any files transmitted with it are confidential and intended solely for the use of the individual or entity to whom they are addressed. This document contains confidential information and is intended only for the individual(s) named. If you are not the named participant you should not disseminate, distribute or copy this document. Please notify Terrence Taylor/SE Photoimaging immediately by e-mail if you have received this document by mistake. If you are not the intended recipient you are notified that disclosing, copying, distributing or taking any action in reliance on the contents of this information is strictly prohibited. Thank you.

SE PHOTOGRAPHY & IMAGING

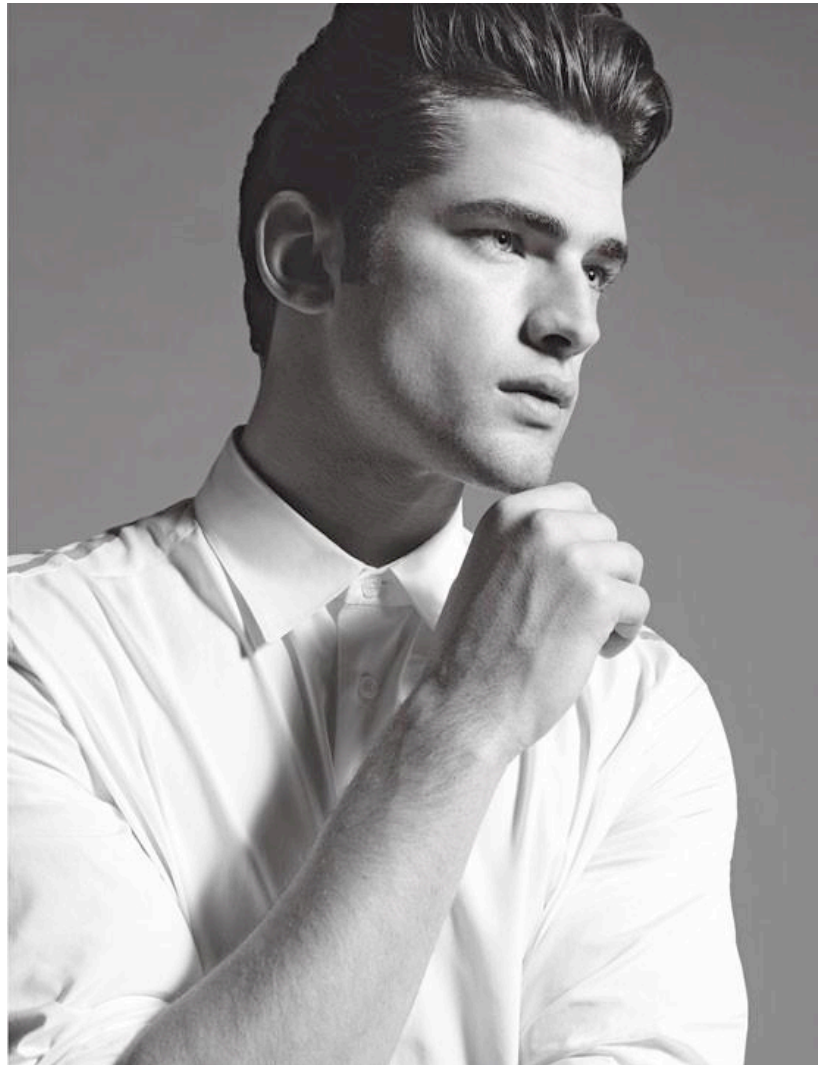
SEPHOTOIMAGING.COM / 510.823.3035

PRODUCTION CALL OUT SHEET

!EYES ONLY FOR CAST AND CREW!

MUA/MUHA Inspiration:

*Clean fresh face
look*



CONFIDENTIALITY:

This document and any files transmitted with it are confidential and intended solely for the use of the individual or entity to whom they are addressed. This document contains confidential information and is intended only for the individual(s) named. If you are not the named participant you should not disseminate, distribute or copy this document. Please notify Terrence Taylor/SE Photoimaging immediately by e-mail if you have received this document by mistake. If you are not the intended recipient you are notified that disclosing, copying, distributing or taking any action in reliance on the contents of this information is strictly prohibited. Thank you.

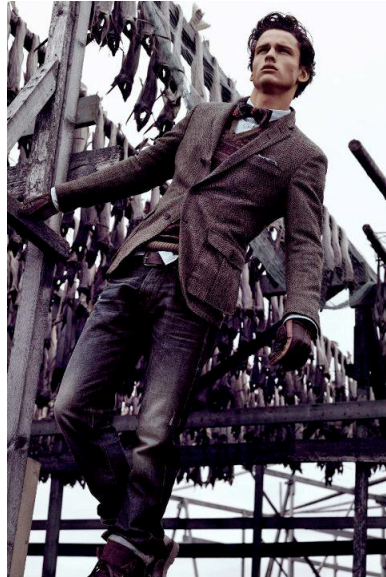
SE PHOTOGRAPHY & IMAGING

SEPHOTOIMAGING.COM / 510.823.3035

PRODUCTION CALL OUT SHEET

!EYES ONLY FOR CAST AND CREW!

Pose/Composition Inspiration:



CONFIDENTIALITY:

This document and any files transmitted with it are confidential and intended solely for the use of the individual or entity to whom they are addressed. This document contains confidential information and is intended only for the individual(s) named. If you are not the named participant you should not disseminate, distribute or copy this document. Please notify Terrence Taylor/SE Photoimaging immediately by e-mail if you have received this document by mistake. If you are not the intended recipient you are notified that disclosing, copying, distributing or taking any action in reliance on the contents of this information is strictly prohibited. Thank you.

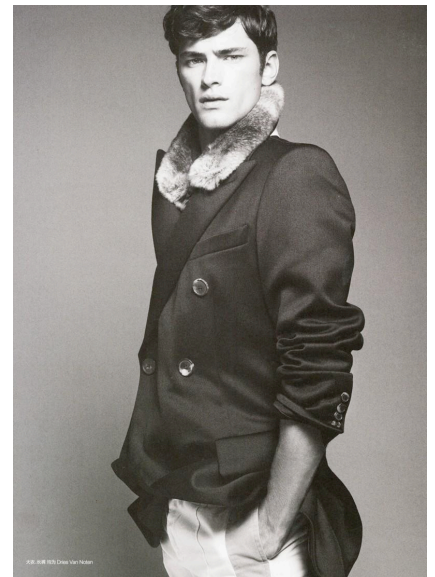
SE PHOTOGRAPHY & IMAGING

SEPHOTOIMAGING.COM / 510.823.3035

PRODUCTION CALL OUT SHEET

!EYES ONLY FOR CAST AND CREW!

Pose/Composition Inspiration:



CONFIDENTIALITY:

This document and any files transmitted with it are confidential and intended solely for the use of the individual or entity to whom they are addressed. This document contains confidential information and is intended only for the individual(s) named. If you are not the named participant you should not disseminate, distribute or copy this document. Please notify Terrence Taylor/SE Photoimaging immediately by e-mail if you have received this document by mistake. If you are not the intended recipient you are notified that disclosing, copying, distributing or taking any action in reliance on the contents of this information is strictly prohibited. Thank you.

SE PHOTOGRAPHY & IMAGING

SEPHOTOIMAGING.COM / 510.823.3035

PRODUCTION CALL OUT SHEET

!EYES ONLY FOR CAST AND CREW!

Pose/Composition Inspiration:



CONFIDENTIALITY:

This document and any files transmitted with it are confidential and intended solely for the use of the individual or entity to whom they are addressed. This document contains confidential information and is intended only for the individual(s) named. If you are not the named participant you should not disseminate, distribute or copy this document. Please notify Terrence Taylor/SE Photoimaging immediately by e-mail if you have received this document by mistake. If you are not the intended recipient you are notified that disclosing, copying, distributing or taking any action in reliance on the contents of this information is strictly prohibited. Thank you.

SE PHOTOGRAPHY & IMAGING

SEPHOTOIMAGING.COM / 510.823.3035

PRODUCTION CALL OUT SHEET

!EYES ONLY FOR CAST AND CREW!

Pose/Composition Inspiration:

WHERE JOY RESIDES

PHOTOGRAPHY: BERT CHUA FASHION DIRECTOR: JONATHAN YEE



CONFIDENTIALITY:

This document and any files transmitted with it are confidential and intended solely for the use of the individual or entity to whom they are addressed. This document contains confidential information and is intended only for the individual(s) named. If you are not the named participant you should not disseminate, distribute or copy this document. Please notify Terrence Taylor/SE Photoimaging immediately by e-mail if you have received this document by mistake. If you are not the intended recipient you are notified that disclosing, copying, distributing or taking any action in reliance on the contents of this information is strictly prohibited. Thank you.